



# JPI CLOUD PACS

## Chiropractic



Ultrasound



X-Ray Grid



Radiography System



Detector



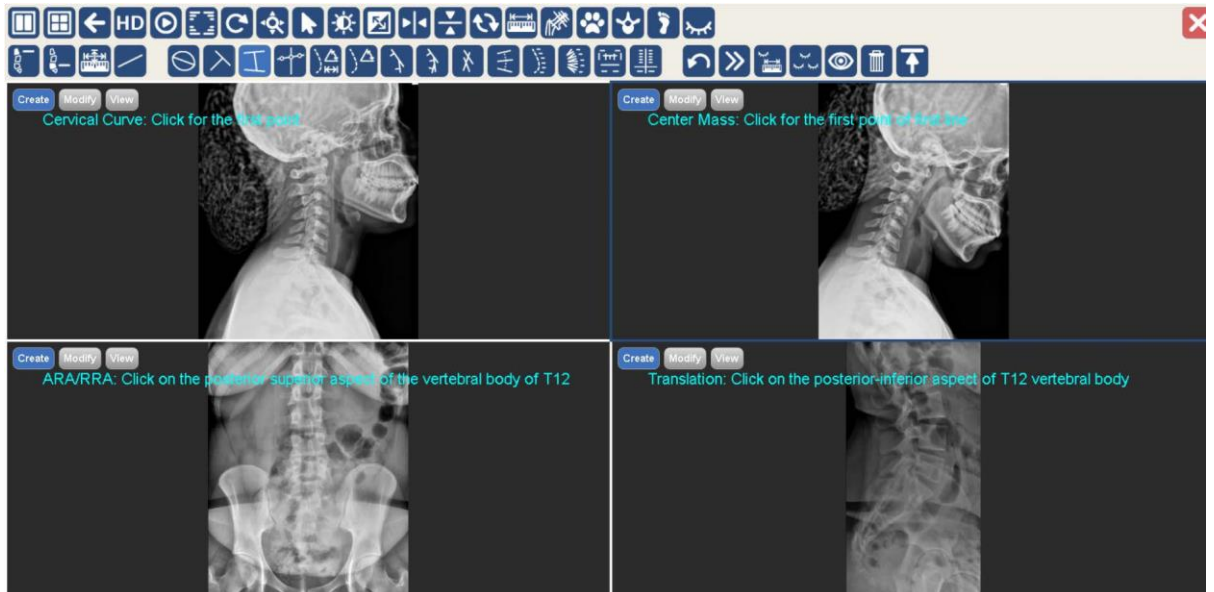
X-Ray Accessories



Diagnostics

JPI Cloud PACS is a HIPAA-compliant backup and viewing solution for doctors like you. Our easy-to-use Cloud solution provides you with the freedom to view your images nearly anywhere on Edge, Safari, and Chrome browsers on your laptop, tablet, or phone with security and ease.

While other providers will try to nickel and dime you every chance they get, JPI Cloud PACS provides the added value of unlimited users and unlimited storage for CR, digital X-ray, and ultrasound.



## Features:

- 256-Bit Encryption Security
- Compatible with any web browser on Windows, Linux, Apple, and other small print devices
- Low-cost annual package for MRI, CT, and fluoroscopy
- No cost for updates or upgrades
- Services Available: CD Burning, Assigning, Uploading Reports, JPEG Downloads, DICOM Downloads



## JPI Cloud PACS chiropractic-specific tools include:

Cervical Lordosis (George Line)	Vertical Distance	George's Line
Cervical Lordosis (C2-C7)	Distance from Vertical Line	Vertebral Angle
Cervical Lordosis (C1 to Horizontal)	Distance from Horizontal Line	Multiple Cobb Angle
Cervical Lordosis (C1-C7)	Horizontal Deflection Line	Extended Cobb's Angle
Cervical Lordosis Upper (177mm)	Ray Line	Multiple Angles
Lumbar Lordosis (George Line)	Spinal Body Canal Ratio Line	Multiple Angles/Angles Between Lines Spine Labels
Lumbar Lordosis (Translation)	Atlas Plane Line	Full Lateral Spine Marking
Lumbar Lordosis (L1-S1)	Cervical Curve (60°)	Gonstead Pelvic Analysis
Lumbar Lordosis (L1-L5) Lumbar	Antero & Retrolisthesis	Logan Basic Marking
Lordosis (T12-S1)	Center Mass	
Horizontal Distance	Atlas Rotation	

Not only is our newest PACS offering a Cloud but it also serves as a HIPAA-compliant off-site backup.



To learn more, set up a JPI Cloud PACS demo, or to make a purchase, please email [brandywineimaging@comcast.net](mailto:brandywineimaging@comcast.net) or Call 800-541-0632.